

R·B

FABIAN WALLPAPER - WOVEN BASE



Fern



Iris



Raspberry



Damson

➤ DIMENSIONS

Repeat (vertical): 56cm / 22"

Repeat (horizontal): 44cm / 17.3"

Width: 134cm / 52.7" (including 2cm / 0.8" over engraving)

Match: Half drop

➤ LEAD TIME

3-4 weeks

➤ MATERIAL

Cellulose, polyester, binder, mineral pigments.

➤ PRINTING

Epson Resin inks work in much the same way as HP Latex inks. The colour will last longer than prints produced with inks that contain dyes. Your print will begin to fade over time depending on the intensity of UV light exposure.

The printers use a four-stage curing module providing users with exceptional colour consistency, allowing for accurate panel to panel colour accuracy. Using Epson Resin ink allows less distortion as the ink can cure at lower temperatures so the materials are less likely to warp or change length.

➤ HANGING

Use a pre-mixed, heavy duty, proprietary brand such as Solvite, Polycell or Halls B-Line and apply the adhesive to the wall.

➤ CARE

Cleaning any contaminants on the wallpaper can be done by washing with a mild detergent, rinsing with clean water and drying with a soft cloth. Only use a cream cleanser if there are marks by an ink ball point pen.

R·B

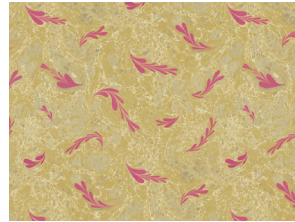
FABIAN WALLPAPER - VINYL BASE



Fern



Iris



Raspberry



Damson

➤ DIMENSIONS

Repeat (vertical): 52.1cm / 20.5"

Repeat (horizontal): 41cm / 16.1"

Width: 125cm / 49.2" (including 2cm / 0.8" over engraving)

Match: Half drop

➤ LEAD TIME

3-4 weeks

➤ MATERIAL

Nonwoven fabric-backed vinyl, nonwoven polyester, cellulose fabric.

➤ PRINTING

Prints produced with inks that contain pigments, such as HP Latex Inks, tend to last longer than prints produced with inks that contain dyes. Your print will begin to fade over time depending on the intensity of UV light exposure.

The addition of an anti-scratch agent provides a high level of scratch resistance on smooth, uncoated media—scratch resistance of HP Latex Inks is higher than competitor eco- solvent inks and comparable to hard solvent inks on self-adhesive vinyl and PVC banner. This high level of scratch resistance significantly reduces the risk of accidental damage during the finishing, installation, and display of unlaminated graphics.

➤ HANGING

Use a Dixon Turner Heavy or Strippable on plasterboard and apply the adhesive to the wall.

➤ CARE

Cleaning any contaminants on the wallpaper can be done by washing with a mild detergent, rinsing with clean water and drying with a soft cloth. Only use a cream cleanser if there are marks by an ink ball point pen.