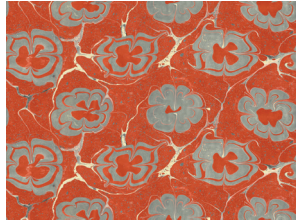


# R·B

## CLUEDO WALLPAPER - WOVEN BASE



Miss Scarlett



Mrs Peacock



Colonel Mustard



Madame Rose

### ➤ DIMENSIONS

Repeat (horizontal): 33cm / 13"  
Repeat (vertical): 68.15cm / 26.8"  
Width: 130cm / 51.2"  
Match: Straight

### ➤ LEAD TIME

3-4 weeks

### ➤ MATERIAL

Cellulose, polyester, binder, mineral pigments.

### ➤ PRINTING

Prints produced with inks that contain pigments, such as HP Latex Inks, tend to last longer than prints produced with inks that contain dyes. Your print will begin to fade over time depending on the intensity of UV light exposure.

The addition of an anti-scratch agent provides a high level of scratch resistance on smooth, uncoated media—scratch resistance of HP Latex Inks is higher than competitor eco-solvent inks and comparable to hard solvent inks on self-adhesive vinyl and PVC banner. This high level of scratch resistance significantly reduces the risk of accidental damage during the finishing, installation, and display of unlaminated graphics.

### ➤ HANGING

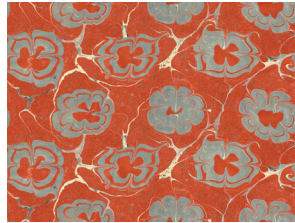
Use a pre-mixed, heavy duty, proprietary brand such as Solvite, Polycell or Halls B-Line and apply the adhesive to the wall.

### ➤ CARE

Cleaning any contaminants on the wallpaper can be done by washing with a mild detergent, rinsing with clean water and drying with a soft cloth. Only use a cream cleanser if there are marks by an ink ball point pen.

# R·B

## CLUEDO WALLPAPER - VINYL BASE



Miss Scarlett



Mrs Peacock



Colonel Mustard



Madame Rose

### ➤ DIMENSIONS

Repeat (horizontal): 30cm / 11.8"  
Repeat (vertical): 61.95cm / 24.4"  
Width: 120cm / 47.2"  
Match: Straight

### ➤ LEAD TIME

3-4 weeks

### ➤ MATERIAL

Nonwoven fabric-backed vinyl, nonwoven polyester, cellulose fabric.

### ➤ PRINTING

Prints produced with inks that contain pigments, such as HP Latex Inks, tend to last longer than prints produced with inks that contain dyes. Your print will begin to fade over time depending on the intensity of UV light exposure.

The addition of an anti-scratch agent provides a high level of scratch resistance on smooth, uncoated media—scratch resistance of HP Latex Inks is higher than competitor eco- solvent inks and comparable to hard solvent inks on self-adhesive vinyl and PVC banner. This high level of scratch resistance significantly reduces the risk of accidental damage during the finishing, installation, and display of unlaminated graphics.

### ➤ HANGING

Use a Dixon Turner Heavy or Strippable on plasterboard and apply the adhesive to the wall.

### ➤ CARE

Cleaning any contaminants on the wallpaper can be done by washing with a mild detergent, rinsing with clean water and drying with a soft cloth. Only use a cream cleanser if there are marks by an ink ball point pen.