



## LUCIAN MIRROR

### DIMENSIONS

W: 86cm / 33.9"  
D: 5cm / 2"  
H: 120cm / 47.2"

### WEIGHT

24kg / 53lbs

### LEAD TIME

10-12 weeks

### FINISH

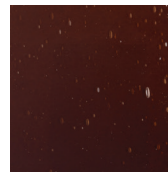


AMG1 - Light  
Antique Mirror Glass



O6 - Fumed Oak

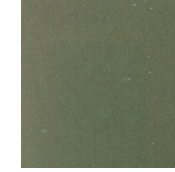
Cathedral glass in either Amber, Alabaster, Celadon, Cobalt, Copper, Emerald, Gold, Quartz or Slate.



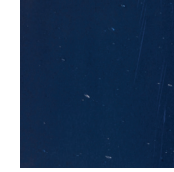
G19 - Amber  
Cathedral Glass  
(paper-backed)



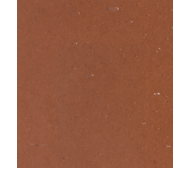
G20 - Alabaster  
Cathedral Glass  
(paper-backed)



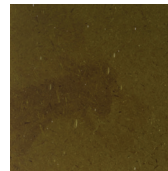
G21 - Celadon  
Cathedral Glass  
(paper-backed)



G17 - Cobalt  
Cathedral Glass  
(paper-backed)



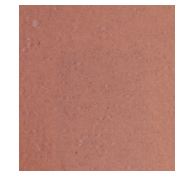
G16 - Copper  
Cathedral Glass  
(paper-backed)



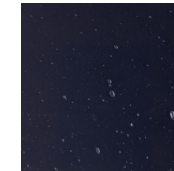
G18 - Emerald  
Cathedral Glass  
(paper-backed)



G5 - Gold  
Cathedral Glass  
(paper-backed)



G6 - Quartz  
Cathedral Glass  
(paper-backed)



G22 - Slate  
Cathedral Glass  
(paper-backed)